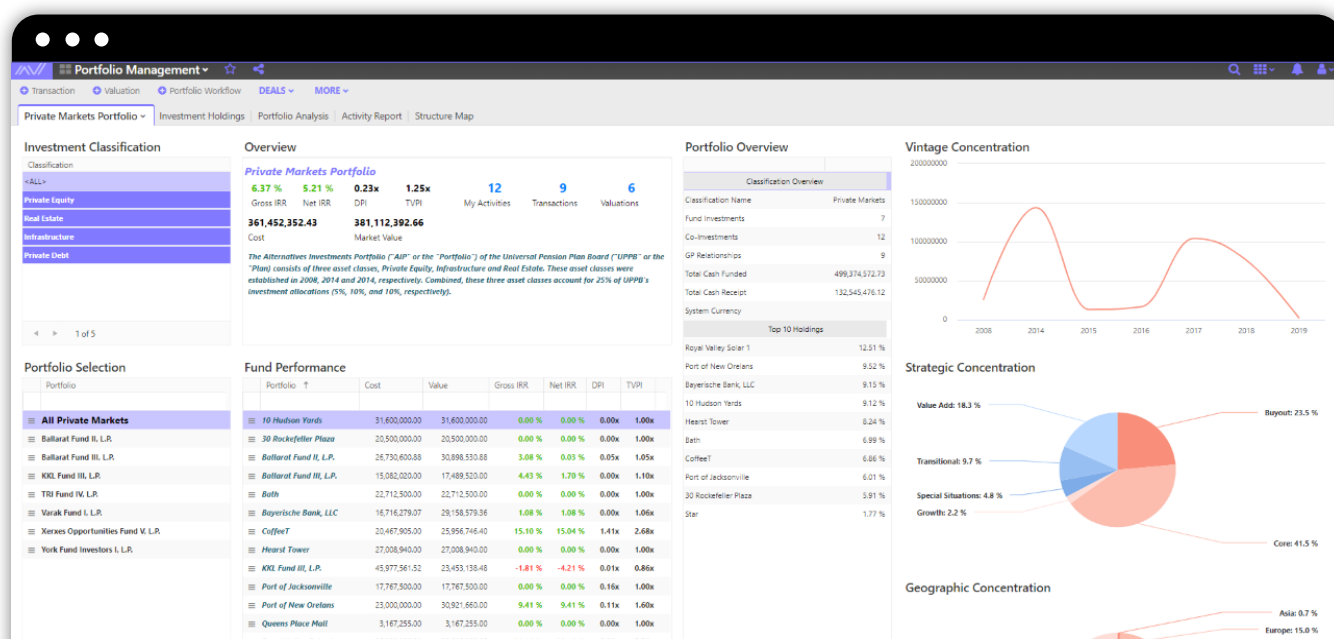


LP Portfolio Management

A fully integrated, multi-asset class focused portfolio management solution designed to enhance investment decision capabilities of LPs. Utilizing the product's robust analytical tool, LPs can monitor their investments and exposure across multiple asset classes and investment types. LPs can gain further insight into their portfolios by tracking new opportunities and forecasting the growth of the portfolios.

Complete portfolio forecasting, insight, and analysis

Allvue Systems' LP Portfolio Management solution has been designed to enhance LP investment decision making as a fully integrated platform empowering Limited Partners / Investors to perform front-, middle-, and back-office activities within a single unified environment. This solution blends functionalities of CRM, Deal Tracking and Analysis, Portfolio Management and Analysis, Reporting, and Investment Accounting into a single product.



Features

Single solution lets you track, analyze and amalgamate different alternatives asset classes

Rich portfolio insights into your alternative investment exposure through built in robust analytical tools

Multiple preset or user-defined performance figures let you evaluate and analyze investments

Robust capabilities allow users to collect and warehouse key information and documentation relating to current investments, new opportunities, fund managers, and contact details

Modeling capabilities for future cash flows and growth of alternatives investment portfolios allowing you to enhance investment decisions and mitigate portfolio risks

Multi-step workflows designed to streamline transactions, portfolio revaluation and new opportunity tracking and analysis

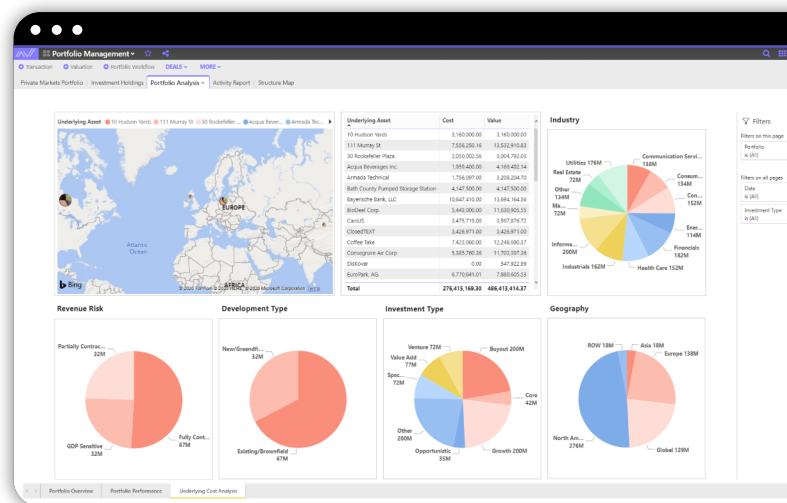
Benefits

Gain insight into your investments through interactive dashboards, pre-set and customized reporting

Track investments from inception to maturity and see granular attributes across assets classes

Monitor investments and investment structures easily via streamlined workflows and interactive diagrams

Project portfolio development to enhance decision-making, and analysis of performance of investments against the market



LEARN MORE

North American Sales: 305-901-7060

EMEA Sales: +44 (0) 207 154 1010

ALLVUESYSTEMS.COM

With Allvue's LP Portfolio Management solution, LPs can explore new and current opportunities, map deals every step of the way, evaluate exposures and performance, and track and monitor cash flows, allowing them to make better and quicker investment decisions.